



## Install your power supply module (TPS TXE devices)

The Trend Micro™ TippingPoint™ power supply module is a replacement unit and can only be used with TippingPoint TPS TXE devices.

You cannot use the power supply module as a standalone product.

The replacement power supply kit includes the following items:

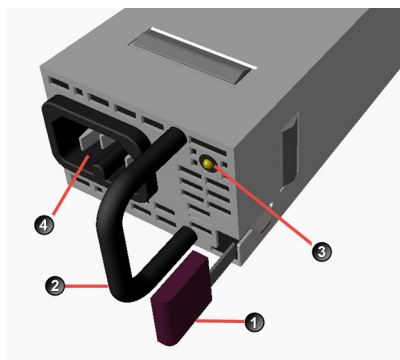
- Power supply module
- Documentation

### Power supply module

All of the supported TPS TXE devices contain power supply slots and support AC power and DC power. Consult your TippingPoint account contact for more information on obtaining DC power supply modules.

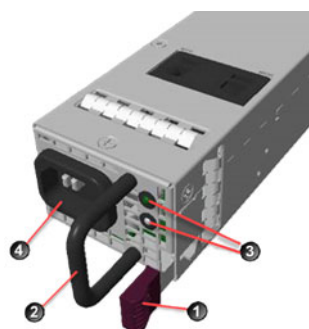
All power supply modules are redundant and hot-swappable.

**Figure 1. TippingPoint AC power supply module for 9200TXE and 8600TXE devices**



1. Removal Latch
2. Handle
3. Status LED
4. AC male power input

**Figure 2. TippingPoint AC power supply module for 5600TXE devices**



1. Removal Latch
2. Handle
3. Status LED
4. AC male power input

The TippingPoint DC power supply module is similar to the AC power supply module, except that it includes external grounding and a power input terminal block instead of the male power input.

## Identify the faulty power supply module

Before you begin, determine which power supply module is faulty and needs to be replaced. You can review the power supply status using the `show health` command in the command line interface (CLI). You can also check the power supply LED:

- Green: The power supply is running normally.
- Off: The power supply is faulty.

**Figure 3. TippingPoint TPS TXE devices - back panel location of power supplies (9200TXE shown)**



Power supply 1 is on the right; Power supply 2 is on the left.

## Install the replacement power supply module

**Note:** The replacement power supply module is hot-pluggable. If only one power supply is being replaced, you can remove the faulty power supply module without turning off the device.

1. Remove the faulty power supply module by pulling out the removal latch and then pulling out the module.
2. Set the faulty power supply module aside.
3. Remove the new power supply module from the packaging.
4. Install the new power supply module by sliding it into the open slot. The latch locks into place automatically.

## Connect an AC power supply module

1. Locate the male power input on the back of the chassis.
2. Plug one end of a standard female power plug into the power input.
3. Plug the other end into an AC outlet, power strip, or UPS.

The power should meet the following requirements for high-end (9200TXE and 8600TXE devices):

- Voltage: 100 - 240 VAC
- Current: 15 - 10 Amps for the 9200TXE device; 12 Amps (maximum) for the 8600TXE device
- Frequency: 47 - 63 Hz

The power should meet the following requirements for 5600TXE devices:

- Voltage: 100 - 240 VAC
- Current: 6 Amps (maximum)
- Frequency: 47 - 63 Hz

4. The device automatically turns on when power is connected. You can configure this behavior using the BIOS setup menu.

# Connect a DC power supply module to TPS TXE devices

DC powered equipment is not provided with a mains switch. For these products, an all-pole mains switch approved to IEC 60947-1 should be incorporated in the electrical installation of the building.

---

**Warning:** When you install the product, always make the ground connection before you apply power to the unit. You must ground this equipment to an external ground connection. Use a green and yellow 12 AWG ground wire to connect the host to earth ground during normal use. Disconnect the ground connection only when the unit is completely turned off.

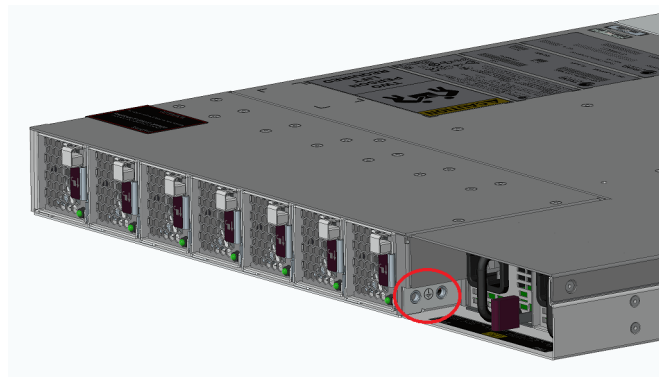
---

---

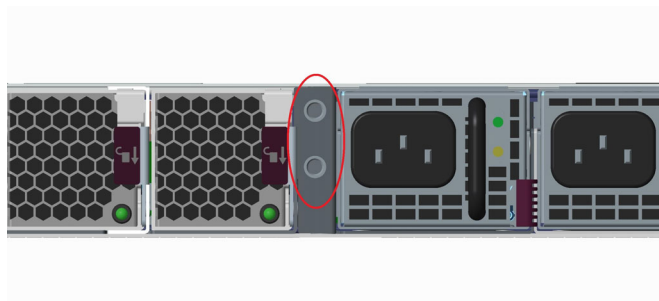
**CAUTION:** Do **not** attach a ground wire to the ground screw on the DC power supply module. Attach the ground wire to the DC grounding screw holes at the rear of the device. Refer to [Figure 4](#) and [Figure 5](#) for the locations.

---

**Figure 4. TippingPoint TPS 9200TXE devices - DC grounding screw holes to accept the lug connector attached to ground**



**Figure 5. TippingPoint TPS 8600TXE devices - DC grounding screw holes to accept the lug connector attached to ground**



**Figure 6. TippingPoint TPS 5600TXE devices - DC grounding screw holes to accept the lug connector attached to ground**



When the DC power supply module has been securely placed in the device, follow these steps to connect power to the DC power supply module.

1. Locate the ground screw on the back of the chassis. Refer to [Figure 4](#) for the location.
2. Attach a 12 AWG ground wire to the chassis ground strap mounting. The wire should be crimped with a ring lug.
3. Locate the power input terminal block on the back of the module.
4. Attach the 12 AWG DC power wires to the power input terminal block labeled -48V and RTN. The power wires should be crimped with lug spades to ensure a secure connection.
5. Connect the other side of the power cable to the SELV power source. The power source should meet the following requirements:
  - Voltage: -40 to -60 V
  - 50 A (maximum) for 9200TXE devices; 30 A (maximum) for 8600TXE devices; 11.5 for 5600TXE devices
  - SELV
6. Depending on the BIOS settings and the state that the device was in when the power was unplugged, the device may not turn on automatically when power is reapplied. If necessary, turn on the device by using the Power button on the front of the chassis. The power supply LED is green when the module is powered and running normally.

## TMC account registration

The TMC provides online access to additional product documentation, updates, and support.

To register for an account, go to <https://tmc.tippingpoint.com>.

## Product support

Information for you to contact product support is available at the [Contact Support](#) site.

## Safety and compliance

TippingPoint products comply with the following safety standards:

- UL 507
- UL 1007
- IEC/EN 60950-1 and 62638-1
- CAN/CSA 22.2 No.60950-1 and 62638-1
- CSA C22.2 No. 113-08
- AS/NZS 60950-1 and 62638-1

## Reduction of hazardous substances

TippingPoint products comply with the RoHS Directive 2011/65/EU.



Trend Micro  
Model Farm Road  
Cork, Ireland  
Eircode T12 VP44

## Waste electrical and electronic equipment



The host product of this custom accessory complies with the labeling requirement of the Waste Electrical and Electronic Equipment (WEEE) Directive 2002/96/EC.

## Turkish recycling notice



Türkiye Cumhuriyeti: EEE Yönetmeliğine Uygundur

## Ukraine compliance statement

Україна: Обладнання відповідає вимогам Технічного регламенту щодо обмеження використання деяких небезпечних речовин в електричному та електронному обладнанні, затвердженого постановою Кабінету Міністрів України від 3 грудня 2008 № 1057.

Ukraine: The equipment complies with requirements of the Technical Regulation, approved by the Resolution of Cabinet of Ministry of Ukraine as of December 3, 2008 No. 1057, in terms of restrictions for the use of certain dangerous substances in electrical and electronic equipment.

## Thailand compliance statement

เครื่องโพรคมนาอมและอุปกรณ์นี้มีความสอดคล้องตามมาตรฐานหรือข้อกำหนดทางเทคนิคของกสทช.

## Legal and notice information

© Copyright 2025 Trend Micro Incorporated. All rights reserved.

Trend Micro, the Trend Micro t-ball logo, TippingPoint, and Digital Vaccine are trademarks or registered trademarks of Trend Micro Incorporated. All other product or company names may be trademarks or registered trademarks of their owners.

Publication: March 2025